

# 6 FOOT SAFEPLAN



*Vertical*

INTERIOR DESIGN

[verticalinteriordesign.com](http://verticalinteriordesign.com)

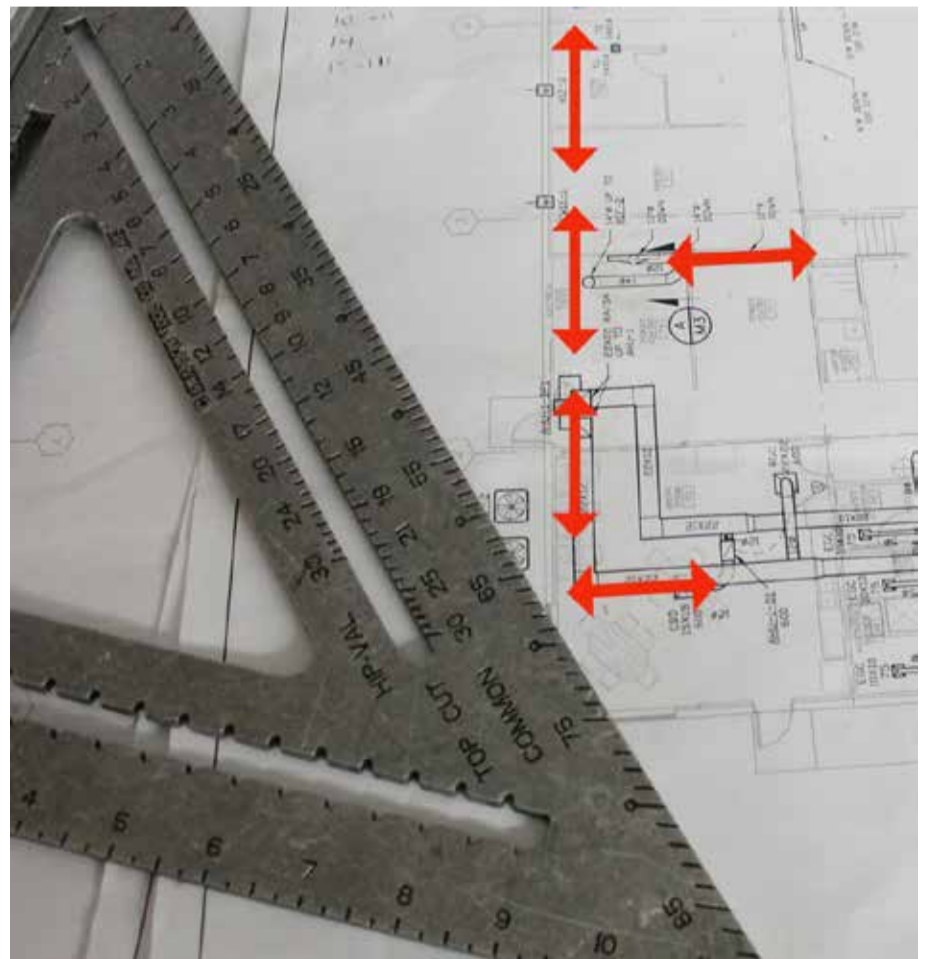
DUE TO THE CURRENT PANDEMIC, BUSINESS OWNERS NEED A WAY TO BRING EMPLOYEES BACK INTO THE OFFICE SAFELY. THE OFFICE IS GOING TO LOOK VERY DIFFERENT. IN ORDER TO ACCOMMODATE NEW SOCIAL PRACTICES AND WAYS OF WORKING, VERTICAL INTERIOR DESIGN IS HERE TO HELP.



## SPACE PLANNING

VID can assess your existing furniture and provide options to reconfigure the space. A proper space plan will allow for people to spread out throughout the workplace allowing for social distancing. To encourage better hygiene and reduce the spread of germs, we can help ensure that six feet, the CDC recommended measurement, stays between employees at all times.

Additionally, through a floor plan, VID will help you determine your maximum capacity per floor or wing. With that information, we then create a 6' workflow throughout the office dependent on the types of work employees will be performing. In addition to signage, designers can use flooring patterns and other creative ways to designate 6' distances.



## SUPPORT PHYSICAL DISTANCING, MAINTAIN AESTHETICS

---



As we return to work, consider acrylic dividers for both temporary and long-term usage in the office. Acrylic is bleach-cleanable and allows for light to flow through, making the office feel open while still providing barriers to protect employees.



### PANEL RISERS

Attached to the top of any cubicle, these come in a variety of sizes and are easily retro-fitted to your existing furniture.

### SAFESPACE™

These clear, portable, and easy to clean dividers allow employees to stay social and service-oriented while keeping a safe distance.

## CREATE PRIVATE SPACES BEAUTIFULLY, AFFORDABLY

---



**Workstation layouts should look much different than they have been. Modify benching stations so employees do not face each other and add dividers in high traffic areas to reduce the risk of spreading germs.**

Add height back into workstations with plexiglass or laminate panels. De-densify the population in the open office by working in shifts, and allowing for employees to work from home.

Create private offices with demountable glass panels. VID can help you allocate private office space based on employee needs and workflow.

# INCORPORATE HEALTHCARE DESIGN PRACTICES

Getting back to work will include more frequent disinfecting practices but should also include design strategies commonly found in healthcare facilities. Why healthcare? Because healthcare facilities have followed strict guidelines on safe & healthy spaces for quite some time. Additionally, healthcare facilities have come a long way and can easily be integrated into the workplace.

- Incorporate sanitation items into each workspace
- Incorporate touchless options wherever possible including faucets, toilets, entryways, elevator controls and hand sanitizing stations
- Improve or add air filtration from space to space
- Use antimicrobial and bleach cleanable fabrics and materials





**REDESIGN  
COLLABORATION  
SPACES,  
CREATE  
FLEXIBLE  
SPACES**

We know that in order to keep your business successful, there must be collaboration between your employees. As human beings, we want to have those connections. Vertical Interior Design can help make that a safe reality. Collaboration will be attained with the help of technology in designated conferencing areas. There are many furniture options that include the needed technology to video-conference while maintaining distance between staff members in the office. We recommend using single seats to replace sofas and benches in those collaborative areas to encourage social distancing. Additionally, we can provide better lighting for those areas requiring conferencing and technology.

## DESIGN WITH MATERIALS FOR BEAUTY AND SAFETY



Striving for a safer, more successful and healthier tomorrow is what every business owner wants. An easy way to help your office be prepared to return to work is using antimicrobial, bleach cleanable materials.

- Update worksurfaces with antimicrobial laminate to increase the hygiene of your office. Effective against a broad spectrum of microbes, enhanced protection is built directly into the laminate.
- Use antimicrobial, bleach cleanable fabric on all seating. These fabrics are resistant to the growth of bacteria, long-lasting, environmentally friendly and beautiful.
- Add Type II Wallcoverings, they are guaranteed solutions that promote a safe environment, plus have the added benefit of style and aesthetic.





## OUR DESIGN SOLUTIONS ARE EASY TO INCORPORATE & AFFORDABLE

As we start to get back to work, it is critical to understand that the design of our workplaces will impact the confidence, productivity, experience and safety of our employees. Let the VID design team help you create your strategy and lessen the overwhelming feeling you are experiencing. Your business may look different. But innovation and flexibility will help you make it through this critical time.

---

CONTACT VERTICAL INTERIOR DESIGN FOR A CONSULTATION TODAY  
[info@verticalinteriordesign.com](mailto:info@verticalinteriordesign.com)  
847.760.8206